

15

FUTURISTIC HUD

SCIENCE UNION

2020

FRESHER HANDBOOK



Your guide to surviving your first year of science
at UWA





Science Union’s Presidential Welcomepg. 5

Everything you need to know about Science Union!

Who are Science Union?pg. 7

Benefits of Becoming a Memberpg. 8

Our Four Portfoliospg. 9

- Education
- External Affairs
- Social
- Welfare

Meet the 2020 Science Union Committeepg. 20

Getting Involved with Science Unionpg. 23

- First Year Representatives
- Sub-Committees

Staying in touch with Science Unionpg. 26

Other Science Clubs on Campuspg. 27

Everything you need to know to survive your first year at University!

Important Dates for all UWA Studentspg. 30

Who are the UWA Guild?pg. 32

Guild Departmentspg. 33

- Access
- Environment Department
- International Students Department (ISD)
- Pride
- Postgraduate Students Association (PSA)
- Residential Student's Department (RSD)
- Welfare Department
- Women's Department
- Western Australian Student Aboriginal Corporation (WASAC)

The Education Councilpg. 37

The UWA Medical Centrepg. 38

Student Assistpg. 40

Other UWA Servicespg. 41

Science Union's Self Care Guide.....pg. 43

Some Serious Things to Keep in Mindpg. 48

Enrolment and Administration	pg. 52
<input type="checkbox"/> StudentConnect	
<input type="checkbox"/> Broadening Units	
<input type="checkbox"/> Class Allocation System (CAS)	
<input type="checkbox"/> Science Student Office	
<input type="checkbox"/> Your Grade Point Average (GPA)	
Find your way around the University	pg. 57
<input type="checkbox"/> Map of the University	
<input type="checkbox"/> Lost on Campus	
<input type="checkbox"/> Transportation	
Lectures and Classes	pg. 61
Assignments	pg. 66
An International Student’s Survival Guide	pg. 70
Exchange	pg. 77
Textbooks and Libraries	pg. 79
Food and Drink Guide	pg. 83
Some Final Tips	pg. 86

PRESIDENT'S WELCOME

A big hello and welcome to all you incoming first years!

My name is April and I'm Science Union's 2020 President . Firstly, I'd like to say congratulations on sucker punching your way through high school and all those gross WACE exams and welcome to UWA! Your days of being enslaved by SCSA are long over and you're about to quickly learn that the grass is very much greener on the other side.



This handbook is basically your own personal 'How to Get a Science Degree for Dummies' so I highly recommend keeping it close and protecting it as if it was your first-born child. There's a whole heap of information in

here that'll make your first year at university feel like

such a breeze. You'll find out everything you need to know to survive as you keep reading on.

Before you embark on your journey, you need to realise that you're here to get more than just a degree (although you've probably heard this already thanks to UWA's marketing and promotions team). UWA has one of the most vibrant campuses ever and is home to over 150 student social clubs and societies. No matter where your interests lie, trust me when I say there is quite literally a club for everyone and everything!

Science Union is always working hard to bring you a whole bunch of awesome events spread throughout the year. We've already got so much planned already to make your first year at uni the best time of your lives! I highly recommend getting around our first-year orientation camp as it's the perfect way to make new friends, meet the Science Union Committee and start your first year at uni with a BANG!

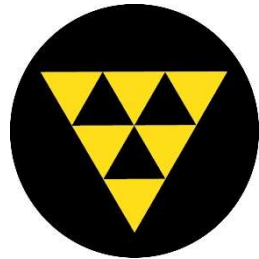
Thank you for reading this far and I hope you find this survival guide to be extremely helpful. If you have any questions or your meme game is strong, please don't hesitate to chuck any of us a message.

Strap yourselves in because 2020 is going to be one hell of a year!

ABOUT SCIENCE UNION

Science Union is the second oldest Faculty Society at UWA; a group of students that represent all students studying one of six areas that fall under the Faculty of Science. These are Biological Science, Earth Science, Human Science, Molecular Science, Psychological Science and Environmental Studies.

Through our four portfolios – Education, External Affairs, Social and Welfare – Science Union aims to run a diverse range of events that provide students with the best educational experience, committed representation, improved engagement and a vibrant campus life.



THE BENEFITS OF BECOMING A MEMBER



As a member of Science Union, you get direct access to our newsletter; a great way of staying updated on all the events being run on campus, as well as any changes that have happened within the university.

Your \$5 membership is a really good investment to make as it gives you \$5 off all event tickets and merchandise for the entire year. Science Union has some pretty cool club shirts and hats available for you to buy. You also get a cool sticker you can add to the back of your student campus card.

We look forward to seeing you and your friends around campus more often!

SCIENCE UNION'S FOUR PORTFOLIOS

EDUCATION

The Education Portfolio is responsible for making sure science students feel comfortable with what they're studying at university, and acts as a bridge to connect students to their Unit Coordinators and the Faculty of Science (the big dogs working behind the scenes).

This portfolio offers opportunities for high school students to come and participate in a day of science presentations and interactive experiments on the UWA Campus. It also runs events to help university students thrive in their area of study. These events include workshops on how to write lab reports or how to use certain programs such as Microsoft Excel.

Our Honours and Postgraduate Networking Evening is a new and perfect opportunity for undergraduate students to meet Honours, Postgraduate and Alumni

students in order to learn more about what awaits them after graduation. The Education Team also organise study nights for units that a majority of science students are enrolled in, providing them with tutor assistance, assignment help and practice questions or exam papers.

Studying can be stressful and intimidating, but this portfolio is here to make your job so much easier!

POSTGRADUATE STUDENT REPRESENTATION

Science Union's Education Portfolio works to represent both undergraduate and postgraduate students. For first years who may not be familiar with the term, postgraduates are students who have completed their undergraduate degree, have graduated and are now studying a more advanced degree such as Honours, Masters or a PhD.

The Education Portfolio has always worked alongside the Postgraduate Student Association (PSA) to bring forth initiatives that cater for the science postgraduate cohort. These include networking events such as the Honours Social Club, study resources, and career information sessions, with new initiatives continually introduced.

Working alongside the Faculty of Science also allows concerns and ideas to be addressed so that postgraduate students receive the best educational experience. Science Union has a Postgraduate Student Representative who also assists in ensuring the cohorts voice is heard.



EXTERNAL AFFAIRS

The External Affairs Portfolio is concerned with running events that introduce students to companies relevant to their field of study and potential future employers.

A perfect example of how this is done is through Science Union's series of Careers Nights, where representatives from science companies are invited to provide information on future employment opportunities, internships and how to get there.


The Next Step is a panel discussion that focuses on one specific area of science, for example Human Biology or Chemistry. The panel discussion gives students the opportunity to talk to lecturers and individuals who have done incredible research in the field.


The LinkedIn Networking Cocktail is the prized jewel of the External Affairs Portfolio. The event creates a fun space for students to talk to professors, employers and big names on the UWA Campus, such as Nobel Prize Winner Barry J Marshall, with food, drinks and music provided.


COMPANIES EMPLOYING STEM



Ernst and Young (EY) is one of the four big accounting firms for science students. Having a science degree puts you in a unique position as you'll have developed the best critical thinking and problem-solving skills when compared to other university graduates. These qualities are very sort after by ALL industries.

 Accenture is a huge, multinational firm that offers some incredible grad programs. They offer technological solutions to problems in a range of industries such as Life Sciences, Chemistry, Natural Sciences and Energy. Some of their grad programs are perfect for STEM majors and you're promised a career for life once everything's completed.

 Based in Western Australia, Alcoa mines Bauxite near Dwellingup. While they typically look for Engineers and Chemists to employ, Alcoa also look for Data Science, Human Resources and Finance majors! Science Union is in contact with Alcoa again this year, with potential for a speaker to come in and inspire your young minds! Even if this isn't the grad program for you, we highly recommend coming down and learning more about this company.

 If you're a Physicist, this is a company for you! The International Centre for Radio Astronomy (ICRAR) is an international renowned, multi-disciplinary research centre. This company hires Engineers, Scientists, and Astronomers. It is ranked in the top 5 university-based Radio Astronomy Research Centres worldwide. It also

offers research opportunities and scholarships for university students.



If you're an environmental student, this is the company for you! Biota Environmental Science is a consultancy that studies environmental impact and different organisations or companies, specialising in flora, fauna and ecology. They hire Botanists, Zoologists and Data Specialists. Biota provides environmental impact studies for a large range of companies and communities.

SPONSORSHIP

Science Union works closely with companies that act as sponsors and sends off applications for grants from external companies and organisations in order to provide its members with the best events and opportunities it can.

This year, Science Union has worked super hard to get our members some amazing deals both on and off with our sponsors. This includes \$5 pints of both beer and cider at Varsity Bar Nedlands when you show proof of club membership.



SOCIAL

The Social Portfolio is our biggest portfolio and the perfect way to combine your love of science with partying!

Science Union runs several social events a year, with some of our biggest being camp, quiz nights, pub crawls and our annual ball. All these events give students the chance to forget the fact they've signed themselves up to three years of studying (and many tears).

Our 18+ camp is run at the beginning of the year and the perfect opportunity for first year students to make friends, socialise with other first years and get the gist

of what their university life will become. Quiz nights are so much fun, filled with general knowledge and other fun games. Every table can dress up to their own theme or the overall theme of the night. Science Union's ball is one of the most famous – or infamous (depending on who you ask). They're held in a beautiful ballroom where we dress up to look our fanciest, eat delicious food and dance the night away.

For students interested in more laid-back social events, we have our Cocktail Making Workshop as well as our Sundowner. Sundowners will be a blessing to your first two weeks of semester and the perfect opportunity to meet new people – especially if you are unable to make it to our camp!

Keep an eye on all our socials for more event updates!



OTHER SOCIAL CLUBS TO LOOK OUT FOR!



UWA's Leisure is one of the biggest, oldest and boldest social clubs on campus. Through their parties, special events and general shenanigans, they promote the establishment of new and worthwhile relationships for existing students of all degrees and ages. Keep an eye out for all their events such as Texicana, some super fun pubcrawls and their Fresher Elections down by the foreshore! It's never a dull moment with the Leisure Family.

Find them at facebook.com/LeisureLlama/



The University Engineers Club (UEC) is UWA's oldest Faculty Society that represents students studying Engineering, Computing and Mathematical Sciences. You don't think Engineers can party? Just you wait until their keggers, pubcrawls and annual ball swing around.

Find them at facebook.com/universityengineersclub/

WELFARE

While at university, it's important to study, socialise as much as you can with friends and utilise opportunities to secure job placements after you graduate. But one thing a lot of university students tend to forget to allocate time to looking after themselves.

The Welfare Portfolio runs events focused on volunteering, relaxation and self-care to ensure students are coping with the workloads and responsibilities they are given.

Scattered throughout the year are plenty of de-stress activities to take your mind away from horrible exams for a couple of minutes. There are also more formal workshops run that concern stress management, alcohol and drug abuse, sexual health and suicide prevention. There are even various social sports teams (heavy emphasis on social rather than sport) which are great if you want to step away from your studies and meet new people. You don't even have to be a professional athlete to get involved!

VOLUNTEERING

Science Union is all about spreading some wholesome vibes and getting students accredited for every single hour of volunteer work they do. Science Union's

volunteering opportunities are a great way to meet new people, help the community and make yourself look like the ideal candidate for companies. Science Union hosts a wide range of volunteering events including (but not limited to) baking for sick children and families staying at the Ronald McDonald House, visits to the Shenton Park Dog Shelter and beach clean-ups. Keep your eye on Science Union's socials so you can get amongst it!



SPORTS

Interfaculty sports is a friendly competition occurring between each of the Faculty Societies on campus on Wednesdays 12-2pm. There's also a new sport played every week. In other words, it's a great opportunity for Science Union and its members to prove why we're the best FacSoc. This is a great way to meet new people, try out new sports and take a break from your stressful classes. If you find a sport that you really enjoy playing, there will definitely be a social sports team for it. We highly recommend you consider joining in!

MEET THE COMMITTEE

President: April Htun

Secretary: Lee Dennis

Treasurer: Kate Stewart

Immediate Past President (IPP): Emma Mezger

THE EDUCATION PORTFOLIO

Education Vice President: Emily De Castro

Education Officers: Audrey Ngo and Natasha Main

International Student Representative: Marcus Jih-Jie
Lim

Postgraduate Student Representative: TBA

THE EXTERNAL AFFAIRS PORTFOLIO

External Affairs Vice President: Nick Willis

External Affairs Officer: Ross Morshead

Sponsorship Officer: Tahlia McDonald

Media Officer: Eliesha Hartley

Graphic Promotions Officer: Kathy Deng

THE SOCIAL PORTFOLIO

Social Vice President: Thi Huynh

Social Officers: Jack Maurice and Heidi Redmond

THE WELFARE PORTFOLIO

Welfare Vice President: Eilish Jones

Welfare Officer: Caitlyn Calderbank

Volunteering Officer: Kaleigh Spithoven

Sports Representatives: Nikita Zhuang and Ryan O'Keeffe

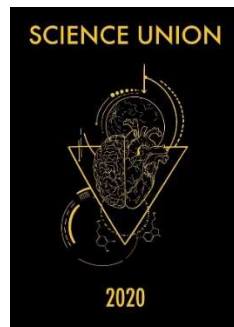
Orientation Director: Sarah Woolhouse

ORDINARY COMMITTEE MEMBERS

Thomas Toovey

Liza Kneebone

Mohammad (Shahab) Rasheed



TAG YOURSELF



April (AP) - President

- Has one-hour naps that last five hours
- Business out front, party out back
- Never angry but will fight you
- Has a song on repeat in their head for 7 business days



Kate (K8) - Treasurer

- Loves Stuart Little with all her heart
- Loves a good excel spreadsheet
- Will wear their converses until their held together by duct tape
- Very particular about their toothpaste



Lee - Secretary

- Religiously goes to sleep at 3am
- Cannot see in HD
- Always smiling
- Can eat his own weight in chicken



Emily – ED VP

- Future wine mum
- Does not have 20/20 vision in 2020
- Cheese, cheese, CHEESE
- Will always feed people



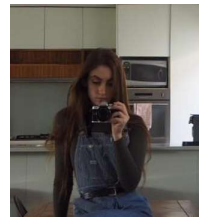
Nick – Externals VP

- Seems smart but has a WAM below 60
- Loves a good pubcrawl
- Still on his learner's permit
- One beer is never enough



Thi (TEA) – SOCIAL VP

- Would travel to Europe with 15c in bank
- Would do anything for a beer and burger
- Seems chill, actually stressed
- Loves a good party



EILISH – Welfare VP

- Won the hottest 100
- In an unhealthy relationship with Dan Murphy's
- Could probably be on cheapskates
- Doesn't understand why people wear shoes

GETTING INVOLVED WITH COMMITTEE

FIRST YEAR REPRESENTATIVES

Every year, Science Union hosts their Fresher Elections where first year students enrolled under the Faculty of Science can nominate themselves to become one of eight Fresher Representatives. Everyone who comes down also gets to feast on the free sausage sizzle!

Four female and four male first years are then taken on board to join the Science Union Committee. As a first-year representative, you would help to organise events at the same time as making a tonne of friends through committee bondings and retreats! Even if you don't get elected, you will always be more than welcome to come have a good time with us.

We like to think we are good fun to hang out with, so we recommend being a part of our big family!

JOINING A SUB-COMMITTEE

Application forms to join our Sub-committees can be found on our Facebook Page. They provide a great opportunity for you to work closely with the portfolio you are most interested in.

EDUCATION

The Education Sub-committee aims to build student and professional networks to provide relevant, well-informed and targeted educational representation at UWA, as well as on a national level. Its role includes helping students deal with educational issues that arise on campus through its network of student membership. Furthermore, if similar issues are arising on many campuses around Australia, we can investigate how the national state of education has led to these issues and advocate for solutions to the problems. Its outward facing aims to engage with professional bodies, government, universities and other relevant organisations to give a voice to Australian science students. We hope to develop a very strong working relationship with these bodies and be the first point of contact for science student consultation.

INDUSTRIES (EXTERNALS)

Science students spend years studying towards a bachelor's degree or higher and yet by the end, many still don't know what options and pathways are available to them. The Industries Sub-committee aims to engage universities, domestic and international employers, internship providers and other relevant bodies to better advertise and promote the career pathways open to science graduates. Its goal is to provide a central resource looking for student internships or graduate science positions. Through our ongoing connection with external bodies; the sub-committee aims to facilitate valuable events for UWA's science students.

EQUITY & DIVERSITY (WELFARE)

The Equity & Diversity Sub-committee aims to improve equity and diversity on campus as well as increase engagement in science through facilitating high quality events for the community. Its aims include promoting equitable access to education and careers for the hugely diverse cohort of students studying science and actively promote science literacy and a better understanding of science in the community.



15

FUTURISTIC HUD



UWA SCIENCE UNION



UWA SCIENCE UNION



SCIENCEUNION.ORG.AU



SCIENCEUNION

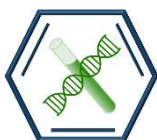
SCIENCE UNION SOCIALS



FOLLOW AND LIKE US, SO YOU DON'T MISS OUT!



OTHER SCIENCE CLUBS



CHEMn \rightleftharpoons BiO

CHEMnBiO represents all students studying molecular science here at UWA. Not only do they supply high quality chemistry memes, they host a variety of educational and social events. If you want to experiment with chemicals, we highly recommend you come check CHEMnBiO out!

Find them at [facebook.com/chemnbio.uwa](https://www.facebook.com/chemnbio.uwa)



The Physiology, Human Biology and Anatomy Club (PHAC) of UWA represents and supports a growing community among all Physiology and Human Biology majors. Their PHAC-tastic events provide you with the key to loving your degree! From study nights that will help you kill it in your labs, to PHAC-ing delicious BBQs, pubcrawls and sundowners, PHAC puts ulna fun in your humerus

Find them at [facebook.com/PhacUwa](https://www.facebook.com/PhacUwa)



Physics. It surrounds us, we interact with it every day and yet we still have so much to learn. They may not be making ground-breaking discoveries at UPS, but they do offer comradery and good times, with the occasional debate on the side, so that when the time comes you can!

Find them at [facebook.com/University-Physics-Society-UWA-1696656783913401/](https://www.facebook.com/University-Physics-Society-UWA-1696656783913401/)



Established in 1961, the Woolnough Society is among UWA's oldest faculty clubs. Representing students studying Geology and Earth sciences, the Woolnough Society organises field trips and other events through the year

Find them at [facebook.com/WoolnoughSociety](https://www.facebook.com/WoolnoughSociety)



No, this isn't a science club for appreciating sausage sizzles (although they do occasionally host some). The student club for the School of Natural and Agricultural Sciences offers both educational industry events and some wild social times. They also offer students a link to the Agriculture Institute of Australia.

Find them at [facebook.com/snagsuwa](https://www.facebook.com/snagsuwa)



The Psychology Society (PsySoc) runs social as well as educational events for both undergraduate and postgraduate students. They also liaise with the School of Psychology here at UWA and the Australian Psychology Society to organise and run several information sessions throughout the year.

Find them at [facebook.com/UWAPsySoc](https://www.facebook.com/UWAPsySoc)



The club for zoology students and biology enthusiasts alike. Check out their events, or you can find them at **[facebook.com/uwazoologyclub](https://www.facebook.com/uwazoologyclub)**



They are the student-run body that represents the students of Sport Science, Exercise and Health at UWA – but they'll happily open their doors to all UWA Students. They aim to provide a year's worth of great social events to entertain students

Find them at [facebook.com/uwapesa](https://www.facebook.com/uwapesa)



HSS is a student-run faculty society dedicated to representing health science majors, including Population Health, Pathology, Pharmacology, Medical Sciences, Microbiology and Immunology and Aboriginal Health and Wellbeing. **Find them at [facebook.com/HealthStudentSocietyUWA](https://www.facebook.com/HealthStudentSocietyUWA)**

IMPORTANT DATES

SEMESTER ONE

24th Feb	First day of Semester One, 2020
29th Feb	Last day to add a unit
2nd Mar	Labour Day (University Holiday) <i>The University will be closed</i>
31st Mar	Last day to withdraw from a unit without financial consequence
10th Apr	Good Friday (University Holiday) <i>The University will be closed</i>
13th Apr	Easter Monday (University Holiday) <i>The University will be closed</i>
13th-19th Apr	Mid-semester study break (Non-teaching week) <i>The University will be open 14th-19th Apr</i>
1st May – 1st Aug	Mid-year re-enrolments open for Semester Two
22nd May	Last Day of Semester One
25th- 29th May	Pre-exam study break <i>The University will be open</i>
30th May – 13th Jun	Exams
1st Jun	Western Australia Day (University Holiday) <i>The University will be closed</i>

15th Jun – 26th Jul	Mid-year vacation <i>The University will be open</i>
2nd Jul	Exam results for Semester One units released on StudentConnect
20th – 24th Jul	Deferred and supplementary exams for Semester One units

SEMESTER TWO

27th Jul	Orientation for Semester Two
31st Aug	Last day to withdraw from a unit without financial consequence
28th Sep	The Queen’s Birthday (University Holiday) <i>The University will be closed</i>
28th Sep-2nd Oct	Mid-semester study break (Non-teaching week) <i>The University will be open</i>
23rd Oct	Last day of semester
26th – 30th Oct	Pre-exam study break <i>The University will be open</i>
31st Oct – 16th Nov	Exams
1st November - TBA	Re-enrolments for 2021 open
16th Nov – 19th Feb	Summer vacation <i>The University will be open except for shutdown period</i>
30th Nov	Exam results for Semester Two units released on StudentConnect

THE UWA GUILD

The Guild remains dedicated to providing the best University experience possible for all students, enabling them to graduate with more than just a degree. Elected by the student body, the Guild Council leads the Guild and provides student representation on many important University boards and committees.

The Guild Volunteering team works hard to bring you a huge range of volunteering opportunities, including day trips and micro-volunteering sessions – make friends, expand your horizons and have an impact.

The Guild Student Centre (GSC) is a hub of information and first port of call for all things Guild – if you don't know who to ask about anything, the GSC is the place to start.



GUILD DEPARTMENTS

Departments and Associations under the Guild provide a community feel on campus, helping students connect with new people and get involved. These departments and associations include:

ACCESS

Provides students with disabilities or who fulfil a caring role with the representation they deserve. They work to not only represent these groups on campus, but also to provide a community for them to take part in.

ENVIRONMENT DEPARTMENT

A sector within the Guild that is geared towards developing a campus culture that values and applies to sustainable practices. The activities, campaigns and events they run all aim to inspire new perspectives on what it means to live sustainably and resourcefully

INTERNATIONAL STUDENTS DEPARTMENT (ISD)

A department that represents the international contingent of the student body at UWA, and acts as an umbrella organisation or international students' associations and clubs on campus. ISD organises events, activities and trips for international students, and look after international students by advocating on issues that concern them.

PRIDE

Pride promotes the visibility of LGBTQI+ students on campus through regular social activities, notices and activism. The department aims to raise awareness and create a community for the LGBTQI+ students at the University.

POSTGRADUATE STUDENTS ASSOCIATION (PSA)

The representative body for postgraduate students at UWA. They aim to make postgraduate students at UWA more visible; to each other, to administrators, and to those outside the University. PSA helps postgraduate students gain access to conferences,

networking events and social evening that will benefit their work in an office or lab.

RESIDENTIAL STUDENTS DEPARTMENT (RSD)

RSD exists as a conduit between the University, the Guild, and the colleges, as well as between the colleges themselves. RSD aims to represent the interests of the college community on the Guild council, as well as assisting the Guild in improving the student experience for those at college.

WELFARE DEPARTMENT

This department is responsible for events, campaigns and initiatives relating to student welfare. This includes all aspects affecting the student experience such as mental health, financial stress and security on campus.

WOMEN'S DEPARTMENT

Exists to represent women and non-binary students on campus. The department works to advocate for women and non-binary students at a university level, produce resources and run campaigns and fun events in order to foster a community between female and non-binary students.

WESTERN AUSTRALIAN STUDENT ABORIGINAL CORPORATION

WASAC works closely with the School of Indigenous Studies to provide a range of social events to build relationships between Indigenous and non-Indigenous students at UWA



THE EDUCATION COUNCIL

The Education Council consists of the Presidents and Education Vice-Presidents of all the Faculty Societies (FacSocs) as well as an Education Council Committee.

The role of the Education Council President, Emma Mezger, is to work together with the 12 Faculty Societies who are on the council to represent students on the matters affecting the quality of their education at UWA.

Together with the Guild President, Bre Shanahan, the Education Council represents students on over 50 university committees. They aim to represent you to the highest level to ensure you have a positive experience at uni. As a student, if you ever run into issues with your units, lecturers or assessments please do not hesitate to contact your education representative within your Faculty Society or reach out

to the education representatives at the Guild. They do our best to ensure students, feel safe are treated fairly and are given a high-quality learning experience.

The Education Council also runs campaigns through the Education Action Network (EAN) to ensure students are informed of their rights at university. This also includes broader matters which affect students such as climate change, LGBTQI+ rights, women's rights and so much more!



THE UWA MEDICAL CENTRE

The University Medical Centre is a super convenient option for looking after your health due to its ability to can bulk bill patients with Medicare cover. With both female and male doctors available as well as a comprehensive mental health team, we would highly recommend book an appointment if you are feeling under the weather. They can give you vaccinations if you require them, as well as medical certificates for when you apply for special consideration. They are located on the second floor of Guild Village.

You can book appointments online at uwa.edu.au/medical-appt

STUDENT ASSIST

Student Assist provides support, counselling and information on anything that might be affecting your study, be it financial, academic or welfare related. The wonderful team at Student Assist can help you apply for special consideration, give grants or loans to those in need, or help with visa issues (to name just a few!).



OTHER SERVICES



UWA'S FIT FOR STUDY PROGRAM

UWA's vision is to assist students in maintaining and improving their physical and mental health and wellbeing, while also building resilience so they can reach their full potential.

The Health Promotion Unit supports student health and wellbeing through the award-winning *Fit for Study* program.

University can be a challenging time of fun first experiences and health risks. Having a healthy and balanced lifestyle can help you to reach your academic potential and enjoy yourself while you study.

UWA COUNSELLING AND PSYCHOLOGICAL SERVICES

UWA recognises there is a range of personal and academic concerns which can have an impact on your ability to study effectively. UWA's aim is to help you better manage these concerns so you can continue succeeding in your studies.

UWA's Counselling and Psychological Service provides professional and confidential service free of charge to enrolled students.



SCIENCE UNION'S SELF- CARE GUIDE

HANDLING SOCIAL STRESS

BE PRESENT

Turning up only for classes and lectures (the bare minimum) makes it extremely difficult to meet people. Make sure you hang around the uni as much as you can – study in the library or attend an event. There's no point relying on hope that you'll meet people in the first lecture you ever attend.

SHOW UP EARLY TO CLASS

Finding it hard to talk to the people in the same class as you? Try and come early. That way you'll have plenty of time to introduce yourself and chat before your tutor rocks up.

ATTEND EVENTS

Going to events when you feel like you don't know anyone can be extremely nerve-racking. But the more

events you attend, the more people you meet and the closer you'll become. University isn't just about studying. You're allowed to have some fun too.

HANDLING STUDY STRESS

TALK TO YOUR PROFESSORS, CLASS REPS AND FACULTY

This may seem like a terrifying idea, but your professors and tutors are always happy to help a student in need, regardless of what you might think. If you have any academic or personal concerns, we highly recommend you talk to them.

GET RID OF DISTRACTIONS

Studying in Reid Library can go one of two ways. You'll either get all your work done, or you'll get absolutely nothing done because you've spent the whole time looking at memes with your friends. Know when you need to move away to a quieter area and try looking for apps that block out distractions and social media for set period of time. This is very important for helping you stay on track.

JOIN A STUDY GROUP

Study groups are a great way to study unit content and get to know your fellow classmates. By working

together, you'll be able to make sense of everything your lecture was talking about in no time.

DO MORE THAN RE-READING

For some students, re-reading over their notes is plenty of study for a test or exam. However, this isn't the case for everyone. Make sure you find a study strategy that works for you so you can fully understand the content you're being assessed on. And no, buying colour coordinated highlighters is not enough study for all the tests you have coming up.

HANDLING EXAM STRESS

TAKE BREAKS

When studying, the last thing you want to do is burn yourself out. Make sure the breaks you take are meaningful for example when you're feeling so tired you're about to pass out. If you're taking breaks for the sake of taking breaks, it's a good indication you probably should be studying instead.

PRACTICE CHUNKING

The best way of getting all the knowledge inside your textbook straight into your head. There's a lot of evidence to suggest this study technique works. Make sure the most important information points are at the

start and end of your notes as these will be what you remember the most!

DON'T PROCRASTINATE

Procrastination – a crime everyone is guilty of. A good way of breaking up this bad habit is by writing a list of everything you need to get done and accomplishing one of those things a day. Just make sure you're not always doing the easiest option. Challenge yourself!

DON'T RUSH YOURSELF

When you're trying to cram the entire semester's worth of content the day before your exam, it's really easy to think you've studied something when really you haven't. Try to pace yourself when studying. If you always test yourself, you'll be able to figure out what you think you know and what you actually know.

CREATE A STUDY PLAN

You can make one for exams or your weekly classes. Creating a study plan is the perfect way to stay on track and make sure you don't fall behind in all the work you've been assigned.

HANDLING PERSONAL STRESS

PRACTICE SELF-CARE

Doing well in your studies is important. But so are you and your mental health and wellbeing! Self-care is different for everyone. Do whatever you need to do to look after yourself and make sure your friends are looking after themselves too.

CREATE BALANCE

As a university student, there will come a time where you find it hard to juggle your personal, family, academic and social responsibilities. Try find a balance between all four. If you have to change where your priorities lie so you don't burn yourself out, then that's okay too!

GIVE YOURSELF CREDIT

You may get to a point where your life is a mess and you don't feel qualified to be studying at university. But look how hard you worked to get where you are now and give yourself a fat clap on the back. Remind yourself that you deserve it and give yourself credit where its due.

SERIOUS THINGS TO NOTE

The university atmosphere can be daunting when you're coming straight from high school. You will experience different things for the first time, and you may make mistakes or do things you regret.

You should always feel safe and comfortable at university, and if there is anything that is making you feel uncomfortable, there are many services available at both UWA and around Perth that will be able to assist you

UNIVERSITY CULTURE

You've probably watched a plentiful of movies and tv shows that have given you a preconceived idea that university will be a wild time. You are more than encouraged to have one of the best times of your life, as long as you do so safely and responsibility. You should never feel pressured to do anything, and it is okay to say 'no' if you don't want to participate in

certain activities. Just because your friends do something and can do it well, doesn't mean that you must do the same, especially if it's something you're not comfortable with. This is particularly important when there is alcohol involved – pushing yourself past your own tolerance just because your friends can leave you in a vulnerable position to make decisions you may regret the next morning. Always make sure you surround yourself with supportive friends and look out for each other.

SEXUAL MISCONDUCT

The rate of sexual assault is highest amongst university-aged people. It is important to note that sexual assault includes all unwanted sexual behaviours.

The Sexual Assault Resource Centre (SARC) provides a free 24-hour confidential emergency service in Subiaco. This involves medical care, a forensic examination and counselling support to people who have been sexually assaulted within the previous 14 days.

UWA DISCLOSURES OFFICER

Trained to deal with disclosure events of sexual assault and sexual harassment, they are the best first contact on campus for information and support related to sexual violence. They offer a confidential service and can provide information on accessing a range of support services such as fast-track counselling appointments, and support with academic matters such as extensions, class changes and deferrals. Feel free to call on 6488 2427 for an appointment or email disclosure@uwa.edu.au

UWA ALCOHOL AND OTHER DRUG COUNSELLING SERVICES

Part of the UWA Health Promotion Unit's Alcohol and other Drug Strategy, this is a confidential service on campus that is free for UWA staff and students. Visit tap.uwa.edu.au to find out more

UWA SECURITY

Campus Security is on call 24/7 to accompany you to car parks, colleges and accommodation adjacent to the University, especially at night. If assistance is required,

call 6488 3020, or for immediate assistance call 6488 2222.

In an emergency always call '000'. UWA Security has an SMS service to assist you if you're in a circumstance where verbal communication is not achievable. You can send a brief SMS to 0438 739 744 (maximum of 160 characters) or add "URGENT" in front of the message if immediate assistance is required. A Campus Security Officer will then follow up

Science Union recommends you save all these phone numbers in your phone number so that you can easily access them if you're ever in need.

ENROLMENT AND ADMIN

Here's some tips if you're having trouble with your timetable or choosing what units to do.

STUDENTCONNECT

studentconnect.uwa.edu.au

This is the home of all administrative information – enrolment and units; exam timetables; unit results and course marks; course fees and account statements (eSOA); student guild fees (SSAF); parking permits and student smart riders; etc. However, this site is also known to crash when you need it most.

Here is where you will enrol in your units. As a full-time student, you will most likely be doing four units a semester. When enrolling for your units, make sure you enrol for the entire year (8 units, four for each semester) - you can always change your units for Semester Two during the winter break. If you are unsure of what units you need to be completing, make sure you check the 2020 Handbook, or use the example study plans online where you can input your

degree-specific major (and second major if you are doing one), and it will show you which units you need to do and when, and how many broadening and elective units you need to complete.

Example study plans can be found at

[http://handbook.uwa.edu.au/undergraduate/study plans](http://handbook.uwa.edu.au/undergraduate/study-plans)

BROADENING UNITS

Australian and International employer groups and professional associations continually emphasise their need for graduates who have not only developed degree specific, knowledge, skills and understanding, but who have also acquired skills and knowledge from outside their area of study in order to prepare them for employment in a changing world.

Broadening units are units that fall outside your area of study. You need to do at least four broadening units to meet the broadening requirements of your degree. Broadening units fall into two categories – A and B, and you can take up to two Category A broadening units within your area of knowledge. Keep in mind that you need to do at least one Category A broadening unit during your degree. To find out what units are outside your area of study, visit the broadening requirements webpage:

<http://handbooks.uwa.edu.au/undergraduate/broadening>

Science Union wants you to make sure you pick broadening units that you enjoy, rather than ones that you hear are supposedly really easy! There's nothing worse than sitting through a boring class on a topic you have no interest in just for easy marks – it may turn out to be more difficult since you aren't enjoying your time studying it.

CLASS ALLOCATION SYSTEM (CAS)

cas.uwa.edu.au/student

This is the timetabling system where you put in your preferences for your classes. Hopefully you've already done this and looked at your timetable for Semester One. No one knows how the algorithm works so make sure to always put your preferences in early so that you can get good times for your classes. You can still change your class times until the end of Week 2, if the classes aren't already full.

If your timetable has clashes and classes are full, feel free to email your unit coordinator to see if they can help you out by reallocating you.

SCIENCE STUDENT OFFICE – OPEN MON-FRI, 9AM-5PM

If you are really struggling with your enrolment and timetable, feel free to drop into the Science Student Office, located in the Agriculture building (near the Barry J Marshall Library). They are extremely friendly and helpful and will be able to help you with any enrolment or timetabling problems you have. When you want to talk to an actual person about your degree, get approval for a unit or simply ask for advice on your course plan this is the place to go. These guys will tell you exactly what units you need to do to get your degree.

YOUR GRADE POINT AVERAGE (GPA)

Your Grade Point Average or GPA is calculated from your unit results. Some students may be required to maintain their GPA in order to enter their postgraduate courses, so it is important to understand how it is calculated!

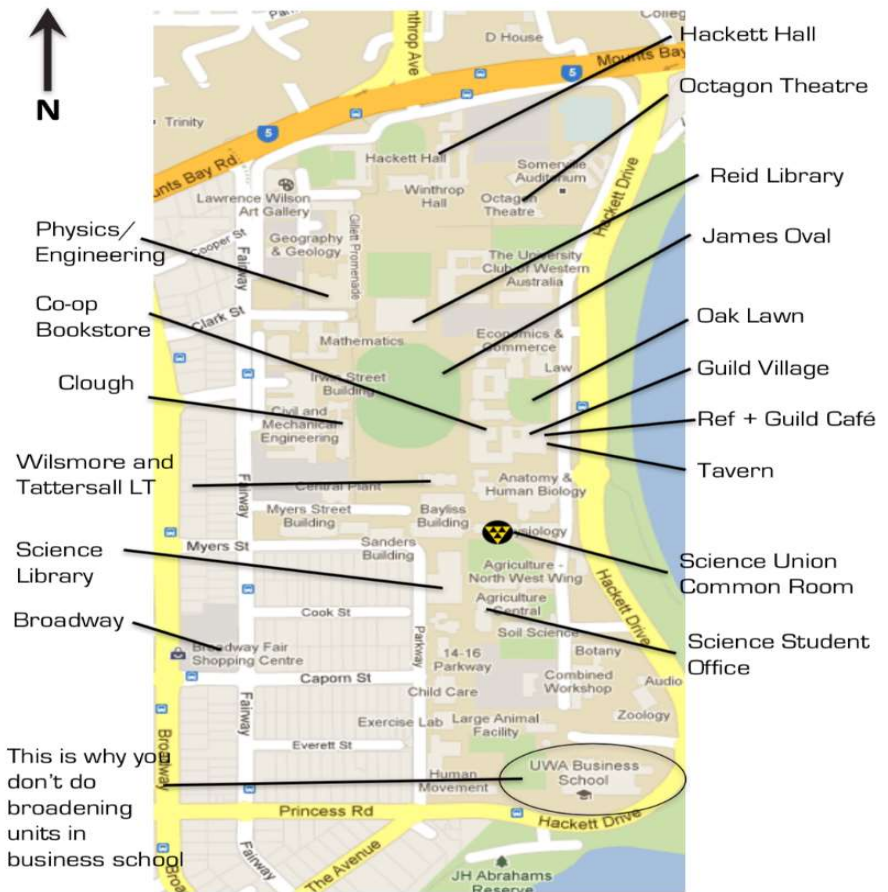
Most units are worth 6 credit points. A High Distinction (HD, 80%+) has a GPA value of 7, a Distinction (D, 70-79%) has a GPA value of 6, a Credit (C, 60-69%) has a

GPA value of 5, and a Pass (P, 50-59%) has a GPA value of 4. If you fail a unit, it has a GPA value of 0.

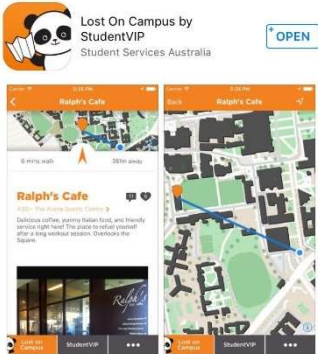
You can find your GPA on StudentConnect, where it has already been calculated for you.



FINDING YOUR WAY AROUND



LOST ON CAMPUS



This will become your new favourite app for the next few weeks (or years). We highly recommend you do yourself a favour and download it on your phone – it practically saves lives! It tells you exactly where all your classrooms or lecture

halls are and will guide you from your current location to your class if you have your location services enabled on your phone. Don't be surprised if you see a third-year student using the app to find their tutorial room that's tucked away in the corner of the university.

TRANSPORTATION

Parking at UWA is more annoying than the people standing outside Reid Library asking if they can talk to you for a minute about signing a petition when all you want to do is study, go get some food or avoid being late to your next class. Unless you arrive at 7am and are willing to pay \$2 an hour, we recommend you take public transport. Second years and above can apply for permits through StudentConnect to park in yellow

bays around campus (though these are very limited in numbers).

Yellow bays are plentiful near the Bayliss building (enter from Fairway), outside the UWA Recreation centre and in front of the UWA Tavern (how convenient!). If these are all full and you're desperate, you could try parking in the yellow bays at the Business School, but no one really wants to walk that far.

You can try your luck on the side streets around the uni, but the parking inspectors have a total of 0 merciful bones in their body and WILL fine you if you are there for longer than what is indicated on the parking sign.

If you live close enough, riding or walking is probably the most convenient method of transportation, and there are plenty of bike racks around uni to leave your bike at. Otherwise, catching public transport is the way to go. There are a number of buses that leave from the north end of campus – the Circle Route (buses 998 and 999), 97 (which goes through Subiaco) and the 950 'Super' Bus, which provides a continue service from the Morley Bus port to QEII Hospital and UWA via Perth.

Check out Google Maps ([google.com/maps](https://www.google.com/maps)), the uni website (transport.uwa.edu.au/public) or the

Transperth app/website for more transportation options and the fastest routes to and from uni.

If you are a fulltime student at UWA (studying at least three units a semester), you can apply for a tertiary smart rider through StudentConnect. Smart riders can be purchased at any newsagency or at the second-hand bookshop on campus (first floor of Guild Village), and make sure you register your smart rider as soon as you buy. It will take three or four trips before you see the cost of your bus ride decrease to tertiary fares, so don't worry if it doesn't work immediately.

LECTURES AND CLASSES

Go to them! Please!

Don't skip classes thinking you'll just catch up on them later. Before you know it, exams will be just around the corner. Cramming an entire semester in two days is the worst experience ever. Treat tutorial classes as compulsory, even if they're not – it'll help you understand the content from lectures so much more. Some lecturers take test and exam questions directly from your tutorial content, so go to them!

LECTURES

However, if you are unable to attend lectures due to work or appointments, all lectures should be made available to watch online and download if they are held in a room with recording facilities. If a lecturer hasn't made lectures available online to stream or download, make sure to let someone know – whether it's your class rep or the Science Union Education Vice President, and they will work to make sure that they

become available for you. Be careful though – sometimes technology does fail, and lecture recordings are corrupted or lost, and since the university recommendation is to attend all of your lectures, there is no guarantee that they will do anything to help those who were not at the lecture.

In your lectures, pay attention to your learning outcomes. Some lecturers like to explain topics for fun (or for further explanation or clarification), so not every slide will be important for your upcoming tests or exams. If you are feeling overwhelmed, be critical of what you do and don't need to focus on – if a lecturer mentions something three or four times, it is probably important!

TUTORIALS

Your tutorials (or workshops, depending on what your lecturer calls them) will be in small groups, typically discussing and further developing ideas that were discussed in a previous lecture. Nobody likes going and contributing in their tutes, which is why most of them will have participation marks attached to them to ensure you attend. Make sure you go to them – you may even find that your tutor gives you a few extra hints about what might be in your exam

LABS

Make sure you pay attention to the dress code for your labs – if you rock up to your labs in Birkenstocks when you need to have closed-in shoes you might not be able to go in or they might give you humiliatingly ugly gumboots to wear. If your lecturer doesn't already ask you to, we would recommend you wearing pants (as opposed to shorts or a short skirt) in case you spill any miscellaneous chemicals or substances on yourself. If you have long hair, always carry a hair-tie with you for when you inevitably forget to tie your hair up on a day you have your lab.

You may feel like the best option would be to complete the lab as quickly as possible so you can leave early, but unlike lectures you can't rewatch labs if you forgot or misunderstood a concept. Your lab demonstrators will be a beacon of knowledge – make sure to utilise them! If you don't understand something that is going on in a lab, make sure you ask them and understand the concept before leaving. Many science courses have a large lab component, and for some you must pass your labs in order to pass the unit, so never underestimate the importance of your labs!

If you need a lab coat for one of your units, you can purchase a UWA lab coat from UniPrint (located on the

first floor of Guild Village, opposite the second-hand bookshop). Most lecturers don't mind what lab coat you have, so if you already have one at home or can find one for cheaper elsewhere, feel free to use that one to save yourself some money. You may also be able to find someone who is willing to sell theirs to you, if you don't mind inheriting a lab coat that may be covered in things you probably don't want to think about.

If you forget your lab coat, most lab will have lab coats you may be able to borrow. And if you're desperate, just make sure you have lots of friends who always have their lab coat with them so you can borrow it off them.

THE BEST WAY TO TAKE NOTES IN LECTURES

Everyone has a different method that works for them, but here are some hot tips!

Many of you will start off handwriting your lecture notes, however, after the first couple of weeks you may find that it is impractical and almost impossible to keep up with the lecturer whilst handwriting your notes. If you have a laptop, many students use OneNote, as you can annotate and write anywhere on the slide. If you don't have Microsoft Office installed

on your laptop, you can download it for free using your UWA student email.

Try using simplified diagrams/visuals to explain complex concepts, which will help with recollection and understanding those brain-straining learning outcomes. Use your first semester to figure out a system that works best for you!

ASSIGNMENTS

ACADEMIC CONDUCT

UWA takes academic misconduct by students very seriously and has policies in place that define misconduct (including plagiarism) and the penalties that come with them. The consequences for misconduct can be severe, including expulsion from the University.

Science Union highly recommends that you make yourselves familiar with all the definitions and policies relating to academic misconduct, so you know the do's and don'ts when completing an assignment. More information about this can be found in the Academic Conduct Essentials module on LMS. Our tip is to do this module as early as you possibly can!

CALCULATOR POLICY

All calculators used for assignments and in tests or examinations must be approved and identifiable by a non-removable and non-transferable approved sticker that has been attached by an authorised body or position comprising staff from Student Administration,

Course Advising Faculty Student Office, or the Co-op bookshop. It is important you get your approved sticker for your calculator as soon as possible, as you don't want to scramble to find one hours before your exam!

Calculators with the following features are not permitted in an examination venue:

- Programable
- Able to display graphics
- Have the capacity to communicate with other devices, including but not limited to Bluetooth

ENDNOTE AND REFERENCING

At university, you're expected to reference any ideas that aren't your own or information you found while reading peer-reviewed articles. More information can be found when you complete the Communication and Research Skills online module on LMS. Our advice is to do this as soon as possible so you can be prepared before you're hit by a wave of your first uni assignments.

EndNote is a software that helps with referencing and one we started using when we were much further into our degrees. The Library is the go-to place for all things EndNote related and you can download it for free from

the EndNote Survival Guide which you can find at <https://guides.library.uwa.edu.au/EndNote>.

The library also provides support, in-person tutorials and online lessons to help you understand just how to use it.

Different assignments will ask you to use different referencing styles. Science Union highly recommend you visit guides.library.uwa.edu.au/referencing as it goes through each of the different styles and provides examples of how you should reference different texts.

TURNITIN

Turnitin is UWA's only text-matching software, and the University's Assessment Policy requires students submit all text-based assignments through text-matching. The software provides you with a similarity score that lets you know whether you've referenced your work correctly or what you've submitted is far too like another student's work.

Make sure you go back over your work after you've gotten your similarity score! Sometimes it'll give you a high percentage for your Assessment Cover Page and reference list which Unit Coordinators usually let slide. However, if whole paragraphs have been highlighted

by the software, we highly recommend you rewrite and resubmit your assessment.

The marking tools available in Turnitin increases the quality of feedback students receive and the efficiency of marking for any type of assessment.

SPECIAL CONSIDERATION

If you feel that your studies have been affected by something unexpected, you are able to apply for special consideration for your assignments, tests or exams. Circumstances in which special consideration will be granted include but are not limited to:

- Illness
- Death or serious illness of a family member
- Serious Injury
- Being a victim of a crime

When applying for special consideration in the case of illness, ensure that the medical certificate states that you are or were affected on the date of your assessment and not just the date you visited the doctor – this is important!

Make sure you follow the instructions found on the special consideration webpage, and if you have any problems or questions do not hesitate to contact your Faculty Office as they will be able to help you.

INTERNATIONAL STUDENTS

Welcome to our Science Union Family!

As an international student, moving to an entirely new place far from home can feel extremely overwhelming. But don't worry! We are here to support you throughout your degree.

Here's everything you need to know to survive your new life at UWA and in Australia.

BANKING AND DAILY EXPENSES

As it one of the VISA conditions, we highly recommend you set up a bank account with one of the four big Australian banks. These are ANZ, Commonwealth, NAB and Westpac. It is also important to make sure you have switched to a reliable and local phone plan from either Optus, Telstra or Vodafone.

Having a financial planner means you're more likely to stay on top of your daily or monthly expenses. Don't forget to set some funds aside in order to cover other things such as food, health care and medication,

transportation and any other expenditures that you'd like to treat yourself with.

DRIVING IN AUSTRALIA

You are eligible to drive in Australia as long as you have a copy of your overseas driver license in English. You can also apply for a local license through the Department of Transport (DoT), but make sure you check the criteria you need to meet before you are eligible to apply.

Having an Australian license as a form of identification is a much safer option than having to carry your passport around as it's the one document you don't want to lose! Always make sure you keep your passport and other important documents in a safe place.

SEEKING HEALTH CARE

As an International Student, it is important you have Overseas Student Health Cover (OSHC) for the entire duration of your stay in Australia. Not only is this another VISA condition but it grants you access to out-patient and in-hospital medical services. This applies to UWA's Medical Centre and various other clinics located around the Crawley, Nedlands and City areas.

Other health related enquiries can be answered by the Allianz insurance team located on ground floor of the Student Central offices

CONSULAR ASSISTANCE

If you are seeking assistance from a Consulate representing your home country, there are numerous offices located in Perth's Central Business District (CBD).

However, your relevant Student Office and the Administrative Offices can solve most of the problems you encounter.

UNIT SELECTION

Onshore International Students must be enrolled in at least three units per semester as part of your VISA as you won't be eligible to stay in Australia unless you are classed as a Full Time Student.

You'll also need to be enrolled in a minimum of 8 units a year; either four each semester or less but including summer and winter units.

For example:

Four units in both Semester One and Two equals eight units total. OR you could do three units in Semester

One, either a summer or winter unit and then four units in Semester Two to achieve eight units total.

TAX FILE NUMBER (TFN)

Your Tax File Number (TFN) is your own personal reference number that is required for tax payments and super annuation. It is important to keep your TFN secure once you have one as it will become an important part of your identity.

Whether you change your name, change your job or move overseas, your TFN will always stay the same.

As international students, you are allowed to work a certain number of hours per week depending on the type of student VISA you have. If you have any plans to work Part-Time while in Australia, there are very strict rules to follow.

Make sure you are not working more than 40 hours a fortnight as this is not allowed. Applying for you Responsible Service of Alcohol (RSA) is also considered to be a breach of your VISA conditions. Any job that does not require you to have an RSA is allowed.

INTERNATIONAL STUDENT TRAVEL CONCESSION

Western Australia is the only Australian state that allows international students to travel under a concession fare.

Smartriders can be purchased from the second-hand bookstore located on the first level of Guild Village or from any newsagent located in Perth. Make sure to link your Smartrider to your StudentConnect in order to be charged the concession rates, otherwise you will have to pay more for public transportation!

Autoload is a very handy tool that allows you to automatically top up your Smartrider when more money is needed. You can sign up for this on the Transperth website. After signing up, you get to enjoy an extra 20% discount from cash fares.

ESSENTIAL BUS ROUTES

One Zone Travel:

- Bus services 102, 107, 950 between UWA and the City

Two Zone Travel:

- Bus services 998, 999 between UWA and Innaloo

Travelling between the Crawley (Main Campus), Nedlands (ALVA) and Medical and Dentistry (QE2) Campuses:

- Bus services 96, 97, 950, 998, 999

VISA AND COE REMINDERS

It is your responsibility to make sure your student VISA is valid, and you have Confirmation of Enrolment (CoE) for the entire duration of your study in Australia. It is also important to know when your student VISA expires. You will either need to depart Australia before it expires or lodge an application for a new VISA. We recommend that if your VISA is expiring soon, you get collect the relevant documents need to apply for a new one 6-8 weeks before it expires.

Visit the Department of Home Affairs website www.homeaffairs.gov.au for further information on the application process for student VISA extension. Please also familiarise yourself with all the conditions surrounding your VISA.

If you have any questions regarding your enrolment or CoE, submit an enquiry via askUWA using your student email address.

<https://ipoint.uwa.edu.au/app/ask>

If you have any questions about your visa, please contact the Department of Home Affairs

www.homeaffairs.gov.au

EXCHANGE

If you're reading this section you might be considering your options to get the hell out of Perth for a semester or a full year to study in a new and exotic location. From the snow-covered mountainous slopes of Canada to the Iberian Peninsula, UWA has a wide array of exchange partners, with a whole host of different opportunities and experiences beyond what you can expect from spending your whole degree at home.

Exchange will allow you to consider an array of new and diverse worldviews, engage with different teaching styles, make useful contacts all around the world or even learn a new language. The possibilities are endless in what may well amount to be the best part of your degree.

Head into student services to ask about your exchange opportunities or feel free to have a chat to any of the numerous exchange veterans dotted around campus.

If you are an Exchange Student who has just arrived in Perth, welcome to our beautiful campus! There is a lot to see and do both on and off campus but make sure you're pacing yourself during your time here.

The Science Student Office is happy to answer any questions you may have how what units are the best fit for your institution's requirements.

Enjoy UWA's student life and the multiculturalism of our campus and be prepared for everything Australia has to offer!

TEXTBOOKS AND LIBRARIES

TEXTBOOKS

Please, for the love of god...DON'T BUY YOUR TEXTBOOKS! Unless you want to be hundreds of dollars in debt after purchasing three textbooks, Science Union recommends you borrow your textbooks from the library. Take it from us – we've been that first year who buys all the books on the recommended textbook list, only to use one page of the textbook all semester. Just about every textbook you'll ever 'need' is available in the High Demand and closed reserve section at Reid Library and the Barry J Marshall Science Library for you to borrow for a few hours. Usually the lecture notes and tutorial problems will be enough to prepare you for exams, but if you need to use a textbook, you're much better off

borrowing it from the libraries or seeing if the second-hand bookshop is selling it for much cheaper! Textbooks are ridiculously expensive, so save your money for better things if you can (or make friends with that person who bought all the textbooks on the recommended textbook list)

LIBRARY STUDY SPACES

Library rooms are good places for group study, projects or meetings. Always book them so that you have the right to kick someone out of the room who is just chilling without having it booked.

Make sure you turn up within 15 minutes of your booking, because after 15 minutes your room is free game for other people to take. Just remember to leave the room you found it. Bookings can be made at the libcal webpage.

library-uwa.libcal.com

ONESEARCH AND COURSE MATERIALS ONLINE (CMO)

This is where you will find the books and journals available in the library as well as online articles to use for your assignments. To make sure the search results show everything that is available to uni students (and not just the general public), make sure you sign in every time you use it!

We would recommend bookmarking this page, as you will be using it a lot to find peer-reviewed scholarly articles for your assignments! Be sure to reference them all properly when using them.

onesearch.library.uwa.edu.au

IT SUPPORT

The IT support in the library is there for all your technological needs. If you have a problem with your PHEME account, Unifi Connection, LMS, CAS or student email account, they will be able to help you!

PRINTING

Upload anything you need to print to this website, then you can go and tap your student card at any printer to get the actual documents. Make sure you have money

on your account, which you can top up at every library. Just remember that if you are paying by card, the minimum top up value is \$5. Copying and free scanning is also available. Barry J Marshall Science Library also has a 3D printer available for use.

print.uwa.edu.au

FOOD AND DRINKS

COFFEE

Coffee is insanely important for fuelling Uni students after a crazy night out or pulling an all-nighter before a test. Don't forget to bring your UWA Keep Cup for a 30c discount on your coffee.

For your best cuppa on campus, we've compiled a list easy-to-understand listings for your Monday morning.

Café	Price (Cheap)	Taste	Convenience
Quobba Gnaring Café (Reid Library)	★★★★☆	★★★★☆	★★★★★
Catalyst Café (Barry J Marshall Library)	★★★★☆	★★★☆☆	★★★★☆
Hackett Café	★★★★★	★★★☆☆	★★★★☆
Rocket fuel (Oak Lawn)	★★★☆☆	★★★★★	★★★★☆
Business School Café	★★★★☆	★★★★☆	★★★☆☆

ON CAMPUS FOOD

There is an assortment of cafes located all over campus! We recommend you check them all out. But don't forget to bring your student card as all members

of the UWA Guild get a cheeky discount on all their purchases.

The Refectory is located right next to Oak Lawn and has a whole variety of food outlets. Campus Kebabs, Boost and Subway are just a few examples of everything you can get!

The UWA Tavern offers student-priced drinks and delicious pub food. Where else would you rather go after your classes? Just remember to bring your ID as it is an 18+ venue.

There are also plenty of vending machines around campus to satisfy all your snack needs and microwaves in the cafes for you to heat up your own food!

There's always something happening on campus. Keep an eye out for Facebook events of clubs running free/cheap BBQs or cake stalls on Oak Lawn during common lunch hour (1-2pm on Tuesdays and Fridays).

OFF CAMPUS FOOD

Broadway is the place to go if you are sick of eating campus food. **Varsity** has a \$10 student burger and chips deal and has a ping pong table. **Ararat Kebabs** has the best kebabs in Perth and giant Turkish bread for only \$4 (great for sharing). Upstairs has an **IGA** where you can buy hummus to go with your Turkish

bread. There is also **Hi Tea** bubble tea, **Nagano Sushi** for Japanese food and **Tommy Sugo** for Italian food. **China Tang** has MASSIVE bowls of noodles and delicious dumplings!! Make sure you bring cash with you when you go to Broadway, as many of the shops are cash only.



SOME FINAL TIPS

SCHOLARSHIPS

If you do well in your first year of university, you will most likely be invited to apply for scholarships and other programs. Apply for them instead of deleting the emails as soon as you get them!! Some of these scholarships are extremely prestigious and will open a magnitude of opportunities for you down the track. Also, who doesn't love a bit of extra money?

EXPERIENCE

Let's face it - a degree alone isn't going to make you the most employable graduate for your dream job. In order to build up your life experiences and resume, it is important to take on every opportunity that is thrown your way! Whether it is taking up a volunteering role or doing a work internship over your summer break, it will all give you invaluable skills that will help you get a job after uni.

EMERGENCY LOAN

Student assist offers an interest free Guild Student Assist loan. This Guild Emergency Loan allows you to borrow up to \$200 on the spot, no questions asked. This is helpful if you have an unexpected bill, you lose your wallet or even if you just leave your wallet at home and need some money for food. The application process is quick and easy you can have up to six loans a year. Just visit the Guild Student Centre to apply. Read more here:

<http://www.uwastudentguild.com/assist/financial/emergency-loans/>

JOIN A CLUB!

Joining a committee is the most rewarding thing you will do during your time at university. You may think it's lame and only the enthusiastic people decide to join committees – but this is not the case! Committees are the best way to make friends on campus, and for many of us our committees were our second family when we were freshers. If you somehow aren't already bored of us and have read up to this page, consider joining Science Union as a first-year representative!



SCIENCE UNION PRESENTS

CAMP

13TH – 15TH MARCH

\$120 MEMBERS, \$130 NON-MEMBERS

