



2018 FRESHER HANDBOOK

YOUR GUIDE TO SURVIVING YOUR
FIRST YEAR
OF SCIENCE AT UWA.

2018 FRESHER HANDBOOK

President's Welcome

About Science Union

A Picture Tells 1000 Words

Important University Dates

Science Union '18 Calendar

Useful Contacts and Links

Transport and Parking

Uni Tips and Tricks

Map of Important Stuff

Best Places to Eat & Drink

Other Science Clubs

Sports

Fresher Reps

2018 Committee

Contact Science Union

Your \$5 Membership

Congratulations! Your membership to Science Union makes you a part of one of the largest student organizations on campus. It also entitles you to receive discount tickets to Science Union events held throughout the year and \$5 off a 2018 Science Union T-Shirt and all other products!



PRESIDENT'S WELCOME

Congratulations on escaping the disaster that is high school, and welcome to your first year at UWA! I'm Nick, your Science Union President for 2018 and I'll be your guide for this nifty little handbook.

First things first, it's important to realise that your time at UWA is not just about getting a degree, because where is the fun in that? UWA especially is unique with respect to our massive club scene – and all the events we run! From Pub-crawls to Quiz Nights, committee members on clubs have accumulated years of wisdom and are there to hold it above your head. We've rushed assignments, crammed exams, and made drunken decisions so you don't have to – but we already know you will.

So, at Science Union, we compile our wisdom together, so that when you do make those decisions, we'll be right there alongside you.

In other news, our CAMP is also a great place to meet new people, as well as the committee! It's run Friday to Sunday on the second weekend of semester - places are strictly limited, so make sure you find us on O'Day to secure your spot!

Lastly, have a read through this handbook for more ideas on what Science Union is like, and the events we're running this year. If you have any questions, feel free to swing past our tent on O'Day, or send any of us a message! We're always willing to help. Good luck and I look forward to meeting you all!



ABOUT SCIENCE UNION

Science Union is one of the oldest and is the largest Faculty Societies on campus at UWA. From humble beginnings in 1924, Science Union has provided students studying the best degrees with a wide range of educational and social events, as well as acting as student representation to the Faculty of Science and the University. All in all, we are here to enhance your university experience in every way we can! Join us as we take on 2018 and help make your first year at uni the absolute best it can be.

Education:

We all like parties and such but lets face it, we didn't come to uni just for that (or maybe some of you did, I don't judge). Over the years Science Union has developed its Education portfolio to provide some of the most beneficial events you can find at University. From study nights to our jam packed National Science Week in August, our education portfolio is there to help you succeed at uni. They can be of help if your struggling in your units or just can't quite figure out how to get LMS to work (don't worry we've all been there)

External Affairs:

Thought about what you might do after your degree yet? Yeah me neither. External Affairs does that for you! We run a bunch of different events to give you information on what you can do and where you can go after your undergrad. We'll run sessions with graduates to help you get a handle on what research you could do and/or provide ample opportunities to network with external companies.



Social:

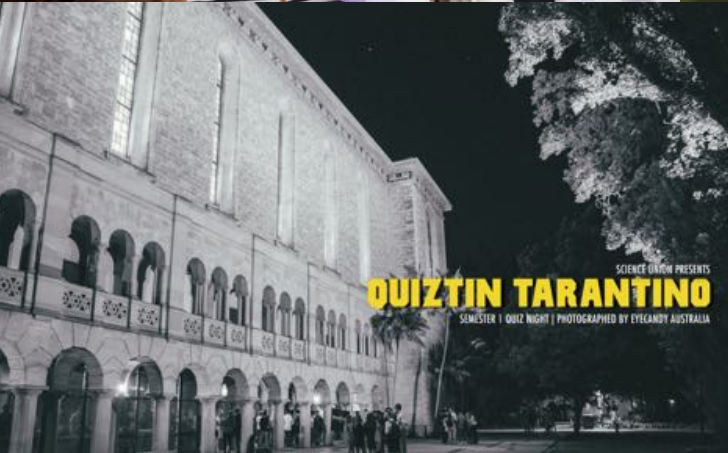
Now this is the popular guy. Science Union has always strived to keep an incredibly positive social reputation. Throughout the year we run a number of great events such as our quiz nights (not quite as geeky as it sounds trust me), pub-crawls, camps and of course our notorious annual ball. When I say notorious, I mean notorious. Banned from 2 venues, fined \$10 000 by another, our ball is always one to remember for better or worse. Definitely something to put in the calendar.

Welfare:

You know that warm and fuzzy feeling you get when you have a cup of hot chocolate? That's the feeling that the Welfare portfolio strives to give. Come down to our fortnightly book club, beach cleanups, paint and sips, tie dying shirts, (the list goes on) as we attempt to improve your welfare and the welfare of everyone around you. We love you!



A PICTURE TELLS 1000 WORDS





SCIENCE UNION '18 CALENDAR

Feb 23	O-Day Festival
Feb 28	First Year Sundowner
Mar 5	Book Club Launch
Mar 6	Club Carnival
Mar 9-11	CAMP!!
Mar 12	Club Room Open Day
Mar 22	Fresher Elections and PUBCRAWL!
Mar 27	Next Step: ANHB
Apr 17	Quiz Night 1
May 1	Careers Fair
May 16	Board Game Night
May 29	Exam De-stressing
Aug 12-19	National Science Week!!
Aug 15	Profs 'n' Pints
Aug 16	3 Minute Thesis
Aug 23	Networking Cocktail
Sep 21	BALL!!
Oct 2	Special General Meeting
Oct 9	Annual General Meeting
Oct 26	End of Semester Show



IMPORTANT UNI DATES

Feb 19-23	Orientation Week
Feb 23	O-Day Festival
Feb 26	First semester classes start!
Mar 10	Last day to add a unit
Mar 30	Good Friday (University Holiday)
Mar 31	<i>Census Date</i> : last day to drop a unit without financial penalty (if you bail out after the 31 st , you'll still have to pay for the unit even if you don't finish it!)
Apr 2	Easter Monday (University Holiday)
Apr 2-6	Non-teaching study week / mid-semester break
Apr 9	Classes recommence
Jun 1	Last day of classes = End of Semester Show!
Jun 4-8	Exam study week
Jun 11-22	EXAMS
Jun 27 – Jul 29	Mid Year Break
Jul 30	Second semester classes start!
Aug 31	<i>Census Date</i> – financial penalty!
Sept 24 – 28	Mid-semester break!
Oct 26	Last day of classes = End of Second Semester Show!
Oct 29 – Nov 2	Exam study week
Nov 5 – 16	EXAMS
Nov 16	SUMMER VACATION

USEFUL CONTACTS AND LINKS

askUWA

ask.uwa.edu.au

askUWA's online FAQ database. Search here for answers to common questions on just about everything to do with studying at UWA.

Blackboard

lms.uwa.edu.au

Your learning hub - on Blackboard you'll find lecture notes + slides, tutorial questions + solutions, discussion forums, online quizzes, links to Echo/LCS for recorded lectures etc. There's even an app on the App Store!

CAS / Class Allocation System

cas.uwa.edu.au/student

Timetabling system where you can still change your class times until the end of Week 2. Put your preferences in early so you can get good times for your classes!

Echo / Lecture Capture System (LCS)

Access from Blackboard

For when you just can't make a lecture... or to review a previous lecture or five (usually in study week, just before the exam). Don't trust it entirely, it doesn't always work. There are also ways to download and slow down lectures.

ECM Student Office

Ground floor, Engineering building

If your unit requires use of a calculator, it **must** have an "Approved Calculator" sticker, available here.

Enrolment Advice

Science Student Office

Located in the Agriculture building (west - opposite Science Library), open Mon-Fri, 9am-5pm. So when you want to talk to an actual person about your degree, get approval for a unit or simply ask for advice on your course plan this is the place to go. These guys will tell you exactly what units you need to do to get your degree

Exam Venues

student.uwa.edu.au/course/exams/venues

Helpful if you need to find a venue and also whether you need a jumper, a scarf and a beanie to survive your exam.

Library Room Booking

is.uwa.libcal.com/

Library rooms are good places for group study or meetings. Just remember to leave them as you found them.

Lost on Campus

studentvip.com.au/lost-on-campus

How to survive your first week of semester. Or first 5. Or 10...

OneSearch/Course Materials Online (CMO)

onesearch.library.uwa.edu.au/

Your go-to for all academic papers, journals, books etc. for assignments. Remember to reference correctly!

The licenses to some documents only exist on the UWA network, so not all links will work when you get home.

Peer Assisted Learning (PAL)

science.uwa.edu.au/students/pal

Work in smaller groups on a unit with a student who's previously done that unit.

Printing

print.uwa.edu.au

Upload whatever stuff you need to print to this site, then you can go and tap your student card at any printer to get the actual documents

Science Assessment Policies

science.uwa.edu.au/students/assignments-exams/assessment

Important information about plagiarism, appealing assessment/exam results, special consideration, etc.

Science Enrolment Information

science.uwa.edu.au/students/enrolment

The Faculty of Science page on everything to do with your degree - classes, timetables, exchange, honours, etc.

Science Union Website

www.scienceunion.org.au

Everything you ever wanted (or didn't want to) know about Science Union and our events!

Special Consideration

student.uwa.edu.au/course/exams/consideration

If you think your study has been severely affected by serious illness or other factors outside your control, you can apply for special consideration.

StudentConnect

studentconnect.uwa.edu.au

Ground zero for all administrative information – enrolment and units; exam timetables; unit results & course marks (GPA/CWA); course fees & account statements (eSOA); student guild fees (SSAF); parking permits & student smartriders; etc.

(the website usually crashes when exam results are released)

Student Email

web.uwa.edu.au/webmail

UWA uses Gmail which can take some getting used to. Remember when sending emails to staff, always use their correct title. Emails can also be synced with your phone!

Undergraduate Degree Structure

studyat.uwa.edu.au/courses-and-careers/undergraduate/degree-structures

For information on majors, core units, broadening units and everything else that goes into your degree.

VPNs

bits.uwa.edu.au/it-help/access/uniconnect/connecting

This is particularly useful to gain access to any website or resources that only work on campus

Wolfram|alpha

wolframalpha.com

Fountain of knowledge. Especially useful when you get stuck on a ridiculous calculus problem, it'll often give you guided solutions to help you out.

TRANSPORT AND PARKING

Parking at UWA is more annoying than Arts Union. Unless you arrive at 7am and willing to pay \$2 an hour or more, we recommend you take public transport.

Second years and above can apply for permits through StudentConnect to park in yellow bays (although these are very limited) around campus. The red bays are the staff bays. Blue bays are disabled parking. Parking in these without a permit will undoubtedly result in a fine.

However! Red, yellow and paid parking are all free for anyone after 5pm and before 8am so if you are unfortunately at uni between these times, feel free to park in these bays. Yellow bays are plentiful near Baylis building and in front of the tav (how convenient).

You may have heard rumours or advice about parking in 'The Pit' – parking at Matilda Bay Yacht Club will now result in a pretty hefty fine. Don't do it.

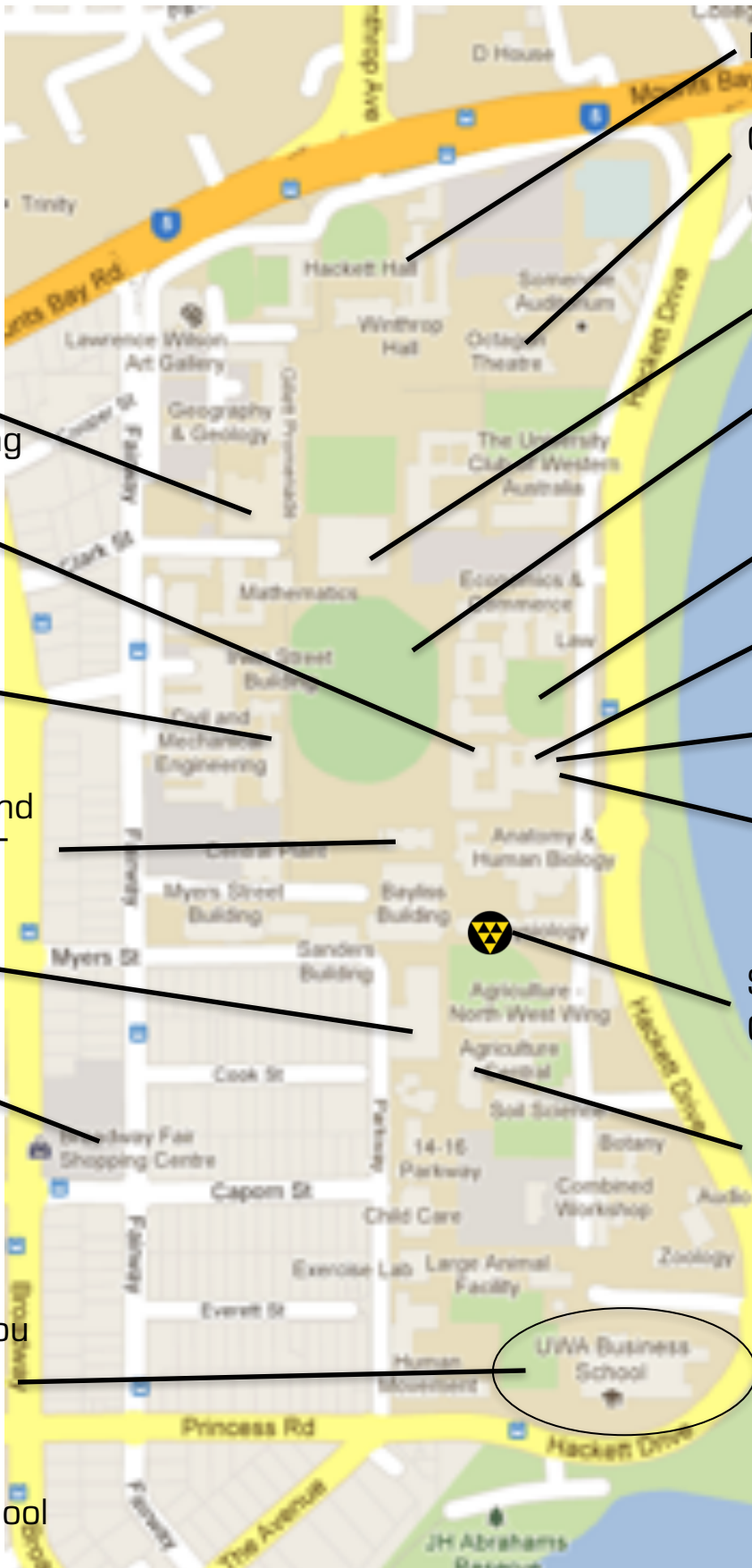
If you live close enough, riding or walking can actually be most convenient. Otherwise, catching public transport is the way to go. There are a number of buses that leave from the north end of campus – the CircleRoute (buses 998 and 999), 97 (which goes through Subiaco) and the 950 'Super' Bus, which provides a continuous service from the Morley Bus port to QEII and UWA via Perth.

Check out Google Maps [google.com/maps](https://www.google.com/maps) or the uni website transport.uwa.edu.au/public for more info on getting to and from uni. As they can give you the fastest routes to or from uni.

UNI TIPS AND TRICKS

Lectures, Tutorials & Classes	Go to them. Seriously. Don't skip classes thinking you'll just catch up on them later. Before you know it, exams will be just around the corner. Cramming an entire semester into two days is the worst experience ever. Treat tutorial classes as compulsory, even if they're not – it'll help heaps with the content from lectures. Some lecturers take test and exam questions directly from tutes, so go to them!
Unit Outlines	A whole heap of information about each unit. You'll mainly be interested in the assessment outline and how much each assignment, tute, lab, etc. will be worth to your final unit grade (as well as due dates). Anything and everything in the unit outline can be assessed so know them well!
Calculators	If you want to use a calculator for a test or exam, it must have an <i>Approved Calculator</i> sticker. This is really important for exams – the exam supervisors are very strict about it. You can grab these from Science Student Services, Guild or if you buy a calculator from Coop they'll give you one . Do it early - it'll take you a few seconds and save you a hell of a lot of grief later on.
Textbooks	DON'T BUY THEM. Just about every textbook you'll ever "need" is available on closed reserve at the Science Library for you to borrow for a few hours. Usually the lecture notes and tute problems will be enough to prepare you for the exam, but if you need to use the textbook just go and borrow it from the library. Textbooks are ridiculously expensive, so save your money for better things if you can.
Assessment Policies	Check out the link in the <i>Useful Links</i> section of this handbook for info on how to appeal a terrible mark, how to apply for "Special Consideration" (if you're sick, have to be away for something, etc. and miss an assessment).

MAP OF IMPORTANT STUFF



Hackett Hall

Octagon Theatre

Reid Library

James Oval

Oak Lawn

Guild Village

Ref + Guild Café

Tavern

Science Union
Common Room

Science Student
Office

UWA Business
School

Physics/
Engineering

Co-op
Bookstore

Clough

Wilsmore and
Tattersall LT

Science
Library

Broadway

This is why you
don't do
broadening
units in
business school

Hackett Hall	Home of Student Administration, the Study Abroad Office, International Student Office and Hackett Café. These guys make some good coffee as well.
Octagon Theatre	One of the largest venues on campus, so lots of first year lectures are held here. Enjoy taking illegible notes due to the lack of desks and snapchatting your friends face of pure focus from across the theatre.
Physics	This is where many physics, maths and other lectures are held. The two lecture theatres are Ross (ground floor) and Clews (2nd Floor). Upstairs are labs and tute rooms. Male toilets are on the first floor.
Reid Library	Recently refurbished. Full of smelly arts and business books. Can be a good place to study or work either by yourself (upstairs) or in a group (large collaborative area downstairs). By some unknown miracle this place is open 24hrs during exam period. Also has a café for your friendly 2pm caffeine fix.
Clough	This is where all the engineers hang out. If you feel like throwing a frisbee or realising how bad you are at math, this is the place to go.
James Oval	Large oval south of Reid Library, where O'Day is held. Interfac sport is often held there too.
Science Union Common Room	Located just inside the sliding doors of the physiology building, we often watch movies, TV shows and pretend to study in here. Its open to everyone and anyone so feel free to drop in. There might even be a reward if you find us.
Guild Village Oak Lawn Ref + Guild Café Tav	The social center of campus. One place to get lunch, coffee or just to hang out on Oak Lawn. 18+ can get into the Tav from 11am. You'll find better food off campus, or just bring your own and use the microwaves provided.
Bayliss Building	The chemistry building. Chem lectures will be held in Tattersall and Wilsmore lecture theatres. CHeMnBiO club room is Room 2.30 (2 nd floor) and is great for a nap.
Science Library	Otherwise known as the Barry Marshal Library Best place to study for science students. Textbooks available for loan from the reserve.
Science Student Office	For when you need course advice (see <i>Useful Links and Contacts</i> section in this handbook) or to discuss your degree with the Faculty.
Broadway	Broadway Fair Shopping Centre is home to IGA, The Broadway Tavern, post office and a selection of delicious food. The best place to get lunch (see <i>Best Places to Eat & Drink</i> in this handbook).

BEST PLACES TO EAT & DRINK

Coffee	Best coffee on campus is found at either the Science Library Café (“Catalyst Cafe”; cheap) or Hackett Hall Cafe (also cheap) . There is also Rocketfuel (south Oak Lawn, Guild Village; expensive), but the guild cafes are a hit and miss depending on the barista. Or go off campus to Neds (Broadway, towards the top of campus), Broadway Fair (a few cafés there)
On-campus food	Try your luck at the Refectory, Guild Village Café or any of the library cafés around campus for a selection of different food options. Or hit up the Tav for some cheap(ish) drinks and delicious pub food. The daily specials are pretty sweet and happy our is between 4 and 5pm, thank me later.
Off-campus food	<p>When you get sick of the average/expensive food on campus, head over to Broadway for selection of delicious/cheap lunch options. Ararat’s Kebabs are considered the best kebabs in Perth by many (and their chips are pretty good, too). There’s a number of Asian restaurants, a few cafés and the IGA supermarket. Varsity serves fancier food if you’re feeling it. Dominos Pizza and Broadway Pizza are just down the road. \$5 pizza is pretty damn good on a uni budget</p> <p>Chilliz (on Broadway towards sterling highway) used to be a haven for uni students. \$5 honey/bbq chicken and rice was great as long as you don’t mind the stomach ache. However they have gotten more expensive as time has gone on although the food is better for it</p>
Microwaves	If you’re more frugal or organised and bring your own lunch from home, there are microwaves in most of the cafes and libraries around campus and the Clough, which you can use for free to heat up food.
Free food	There’s always something happening on campus. Keep your eyes peeled for one of the many free/cheap BBQs at lunch hours, free cupcakes every now and then, etc. If you ever make the mistake of having Friday classes the UEC BBQ at Clough is a gold coin donation.

OTHER SCIENCE CLUBS



CHeMn \rightleftharpoons BiO

CHeMnBiO

CHeMnBiO represents the peeps studying molecular science here at UWA. Not only do we supply high quality chemistry memes, we host educational and social events. If you want to experiment with chemicals, come check out our club!

facebook.com/chemnbio.uwa

P.H.A.C.

The Physiology, Human Biology and Anatomy Club of UWA (PHAC) represents and supports a growing community among all Physiology and Human Biology majors. Our PHAC-tastic events provide you with the key to loving your degree! From study nights that will help you kill it in your labs, to PHAC-licious BBQs, pub crawls and sundowners, PHAC puts ulna fun in your humerus.

Facebook.com/PhacUwa/



University Physics Society

Physics. It surrounds us, we interact with it everyday and yet we have so much to learn. We may not be making groundbreaking discoveries at the UPS but we do offer comradery and good times, with the occasional debate on the side, so that when the time comes you can!

facebook.com/groups/UniversityPhysicsSocietyUWA



Woolnough Society

Established in 1961, the Woolnough Society is among UWA's oldest faculty clubs. Representing students studying geology and earth sciences, the Woolnough Society organises field trips and other events throughout the year.

facebook.com/WoolnoughSociety





PsySoc

The Psychology Society (PsySoc) runs social as well as educational events for both undergrad and postgrad students. If you ever need support clarifying anything to do with your psych units, we are here to help and can communicate with the school on your behalf. We know that psychology tutes are usually quite large and often don't run consistently, therefore students tend to find it difficult to get to know one another. Rest assured, if you attend our social events, you will have countless opportunities to meet others studying the same degree as you. We also liaise with the School of Psychology here at UWA and The Australian Psychological Society to organise and run a number of information sessions throughout the year.

<https://www.facebook.com/UWAPsySoc/>

SNAGS

The student club for the Faculty of Natural and Agricultural Sciences. Offering both educational industry events and some wild social times, SNAGS also offers a link to the Agriculture Institute of Australia.

[facebook.com/groups/snagsuwa](https://www.facebook.com/groups/snagsuwa)



Zoology

The club for zoology students and biology enthusiasts alike. Find them down at O'Day and make sure to check out their events!

[facebook.com/uwazoologyclub](https://www.facebook.com/uwazoologyclub)

Sport Science, Exercise & Health (SSEH)

Formally known as PESA, the student club representing students studying Sport Science, Exercise and Health at UWA is back in 2016. We aim to provide a year's worth of great social events to entertain students!



Health Students Society

HSS is a student-run faculty society dedicated to representing health science majors, including Population Health, Pathology, Pharmacology, Medical Sciences and Aboriginal Health and Wellbeing. We have also established Facebook networks where you can find out about internship and career opportunities along with connecting with students in the same health units as you. You can find our clubroom on the 3rd floor of the Guild Building (entrance in the Ref Courtyard), and you can also follow us on Facebook for more information:

<https://m.facebook.com/HealthStudentSocietyUWA/>



NOW SOMETHING MORE SERIOUS

Our aim as Science Union's committee is to ensure that all our members feel safe and comfortable at our events, and at university in general. We want to encourage an environment where you feel comfortable talking to someone if you have any concerns, especially for tough issues such as mental health and sexual misconduct.

There are a range of options and many people who are more than willing to offer their help and support both internally at UWA, and externally. The following pages detail the numerous services offered by Student Assist. Myself and Nicholas are also here if you would like to talk about anything in a more informal way. The university also offers several services including Disclosure Officers, Complaints and Security reports if you have a concern relating to an individual at UWA. For sexual misconduct reports, there are also external organisations which you can report to including the Sexual Assault Resource Clinic (SARC), the police, and Women's support centers.

As a committee, we take welfare issues very seriously and encourage you to contact us, or student assist, if you have any concerns, or if you would like any extra information on the services that are available.

- Jill Brouwer, Welfare VP

SPORTS!

Are you stressed out about assignments and need something to procrastinate with?
Need an excuse to run around aimlessly for a few hours?
Can't lose that beer belly?
Get involved with the wide variety of sporting options available at uni!



There is an opportunity for people interested in a wide array of sport to get involved with interfaculty sport. It's a good excuse to run around for a few hours on a Wednesday Afternoon (12-2pm) and forget about that assignment that you forgot to hand in yesterday (there may even be jugs at the tav after. Each week we compete against other faculties and clubs in different sports, from netball to paddling, to tennis and basketball. It's a social environment and you certainly don't have to be good at sport to have fun.

We also have social sport teams for Ultimate Frisbee, Netball and 5-a-side soccer. These happen weekly on Monday, Tuesday and Wednesday nights (depending on what sport you play) and we're always looking for new team players! Sport with Science Union is a great way to break up the monotony of lectures, assignments and raves, and there's something for everyone.

FRESHER REPS

We take 4 girls and 4 guys onto the committee as first year representatives. Our 'elections' if you can call them that are on the 22st of March in the lecture theatres near Oak lawn. We like to think we are good fun to hang out with so I recommend coming along but even if you don't get elected we would love to have you hang around. Here is a picture of our fresher reps of 2017 all suited up on our first pub-crawl (which is happening after elections!)



2018 EXEC COMMITTEE



Nicholas Gibb – President

As the head honcho round here, I'm in charge of making the big decisions. Or at least I like to think so. I also love pub-crawls and being a BNOC.



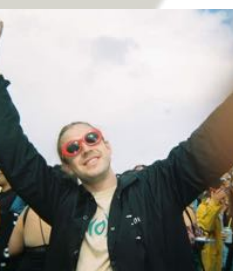
Alice Dix-Matthews – Education Vice President

I'm the Ed VP. This means that if you have any Ed related issues, such as being called Edward, I can help. I can also be of assistance if your units suck



Eli Wadrop – External Affairs Vice President

Basically I just stay outside and maybe sometimes let you know what you can do after uni.



Hayden White – Social Vice President

As Thornlie's best and brightest having grown up fighting kangaroos in the bush around my home, it feels great to be the most social member of committee and a McDonalds employee of the month xD.



Jill Brouwer – Welfare Vice President

Hey I'm Jill, I'm a great listener and I love the beach. If you want a chat or a beach trip or both at once hit me up.



Jessica Khoo – Treasurer

I like treasure.

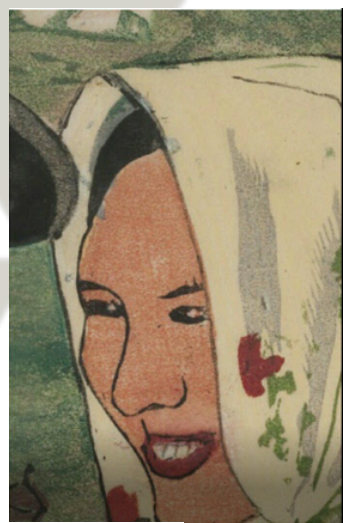


Emma Mezger – Secretary

Hi I'm Emma, but you can address me as Madame Sexretary. My job is to make coffee for the President and change his nappies.

2018 EXEC COMMITTEE

President	Nicholas Gibb 21986327@student.uwa.edu.au
Education VP	Alice Dix-Matthews 21715895@student.uwa.edu.au
External Affairs VP	Eli Wadrop 21973316@student.uwa.edu.au
Social VP	Hayden White 21704831@student.uwa.edu.au
Welfare VP	Jill Brouwer 21726197@student.uwa.edu.au
Treasurer	Jessica Khoo 21731035@student.uwa.edu.au
Secretary	Emma Mezger 22244264@student.uwa.edu.au



2018 COMMITTEE

Education Officers	Samantha Smith and Quinn Koelen
Social Officers	Charlie Grief and Sarah Woolhouse
Volunteering Coordinator	Caitlyn McCormack
External Affairs Officer	Himanshi Satnani
Welfare Officer	Aidan Lewins
Sponsorship Officer	Andre Boer
Female Sport Rep	Kaleigh Spithoven
Male Sport Rep	Kevin Mezger
Media Officer	Olivia Tan
Graphical Promotions Officer	Zack Chen
Post-graduate Rep	Brady Johnston
International Student Rep	Camille Manière
Orientation Directors	Hayden White and Alex Tsaknis
Ordinary Committee Members	Megan Wilkinson, Becky Kaard, Michael Weir, Emily De Castro, Tahlia McDonald,
Immediate Past President	Ivan Roncevich

CONTACT YOUR SCIENCE UNION



Email

scienceunion@gmail.com

Website

www.scienceunion.org.au

Like the Science Union facebook page –

www.facebook.com/ScienceUnionUWA

Add our dear friend “SU Uwa” on facebook.

<https://www.facebook.com/ScienceUnionUWA/>

Facebook

Join our Fresher group:

Science Union Freshers 2018

where you'll get updated on the more hectic happenings

Instagram

@scienceunion

Snapchat

@uwascienceunion



WHAT'S ON THIS SEMESTER



"Do you like breakfasts? We do too, so much so that we BBQ up a storm every 2nd week by guild village. \$3 gets you a bacon and egg muffin with vegetarian options available. So come down for a healthy, guild approved feed before uni fun times"

"4 Of UWA's biggest clubs and Facsocs are teaming up to help you meet some new faces. Social outreach teaches you how to survive uni whilst also getting you interacting with people inside and outside your major. It's an annual event so this is your only chance to get down and participate, and trust me its worth it. Leisure is also holding their First Year Sundowner straight after which is always a blast. We'll see you there!!"

FRESHER SOCIAL OUTREACH!

Your guide to surviving your first year. Come meet fellow first years and the reps from some of the largest clubs on campus... it's FREE!

Tues 27th Feb | 1 - 4 PM | Oak Lawn

AN ALL AGES EVENT PROUDLY RUN BY



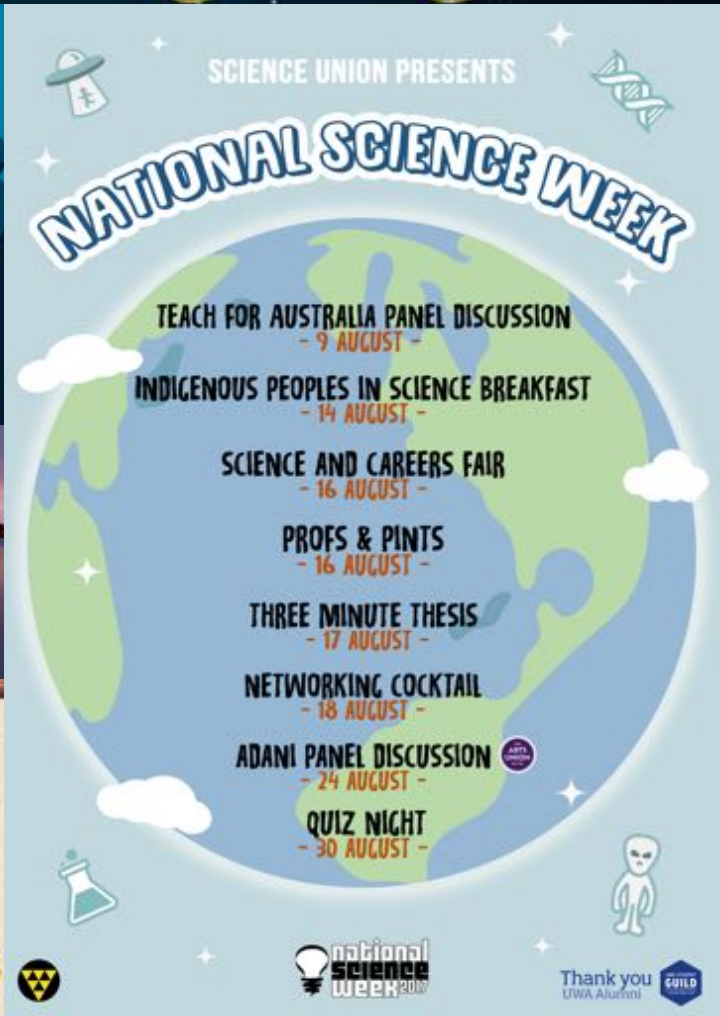
LEISURE
SOCIAL CLUB UWA



2017: A YEAR TO REMEMBER



SCIENCE UNION BALL
**THE LOST CITY OF
Atlantis**



SCIENCE UNION PRESENTS

CAMP 2018

9TH - 11TH MARCH

\$120 PER PERSON

Strictly No BYO
18+ Drink Responsibly

Ticket Sales From Monday 19th



SCIENCEUNION@GMAIL.COM



UWA SCIENCE UNION



UWA SCIENCE
GUILD

